

Anatomia Comparada do Sistema Reprodutor Masculino nos Animais Domésticos

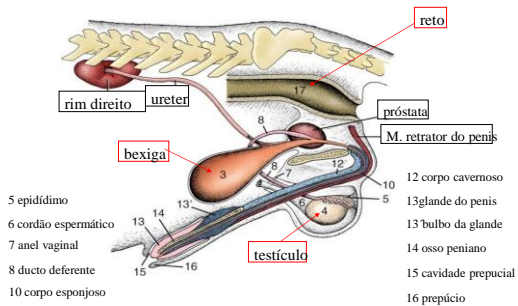
(Equinos, Bovinos, Suínos, Ovinos e Caninos)

Rosane Maria Guimarães da Silva

Aparelho urogenital

- Órgãos urinários
- Órgãos genitais

cão



ÓRGÃOS GENITAIS MASCULINOS

Aparelho genital masculino

- gônadas pares - testículos
- sistemas pares de canalização gonadal
 - epidídimo
 - ducto deferente
- glândulas acessórias
- pênis
- adaptações cutâneas

Testículos

Funções

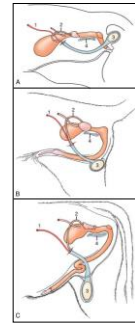
Testículos

Funções

- produção de gametas (espermatozoides) e hormônios masculinos
- influência da temperatura

Forma – Volume - Orientação

- 1 A. testicular
- 2 Ducto deferente
- 3 Testículo
- 4 sínfise pélvica

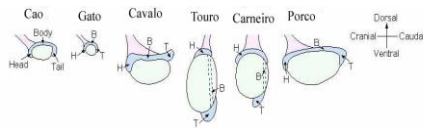


gato

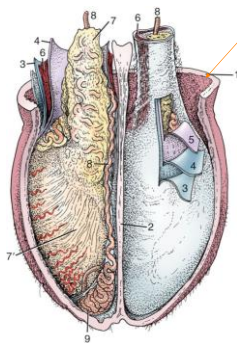
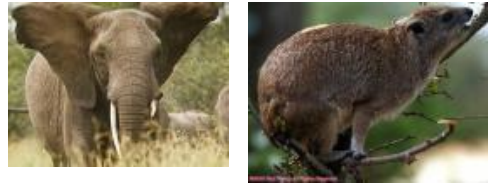
cão

touro

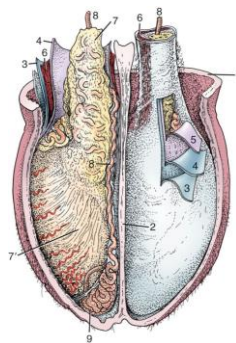
EPIDÍDIMO



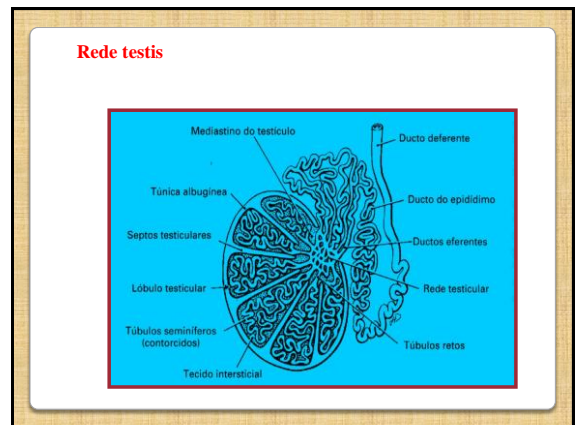
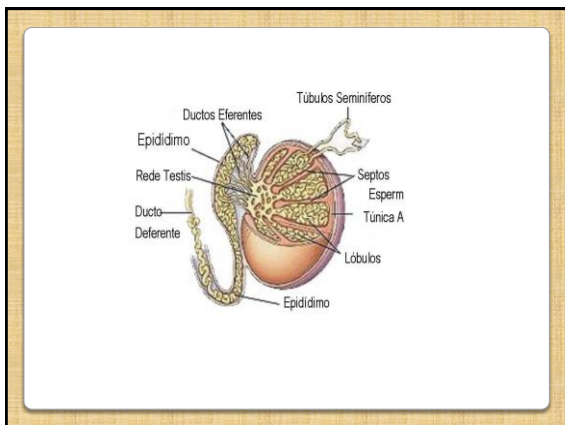
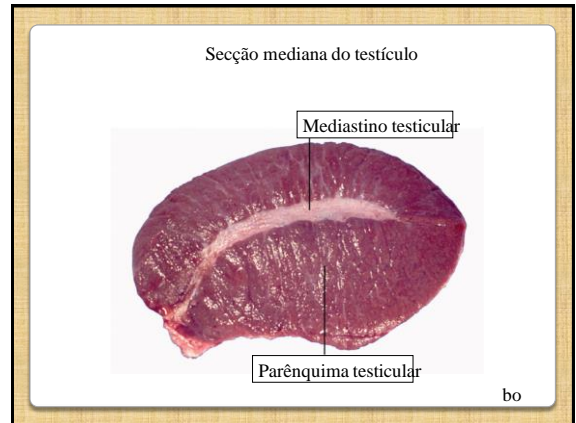
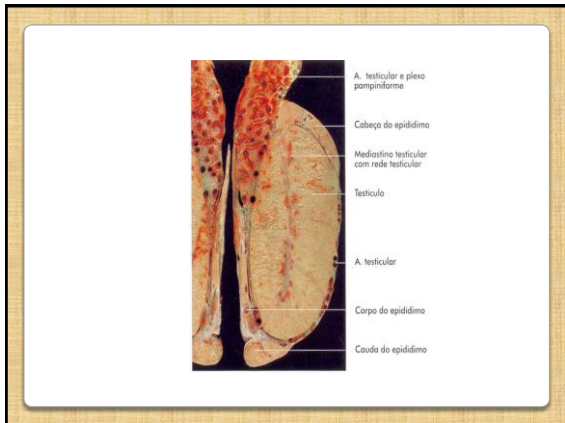
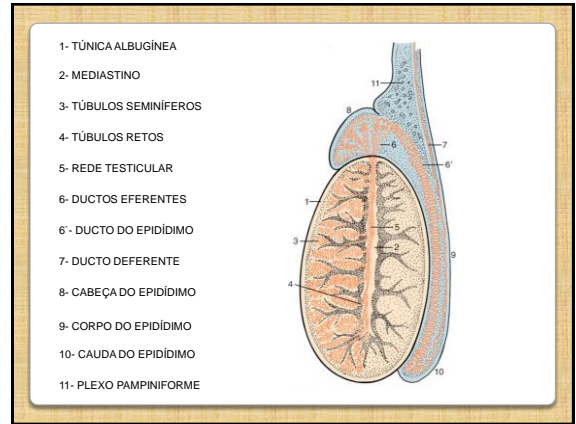
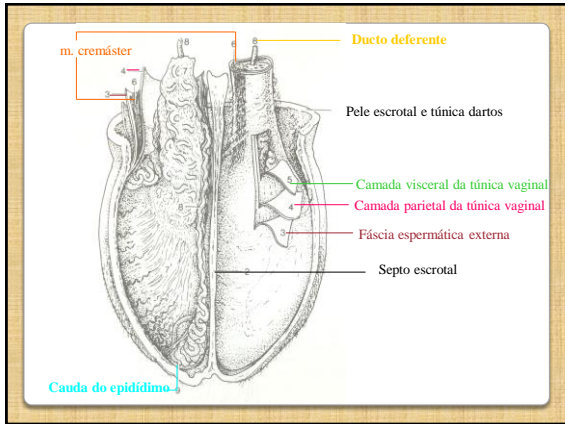
Testículos na cavidade

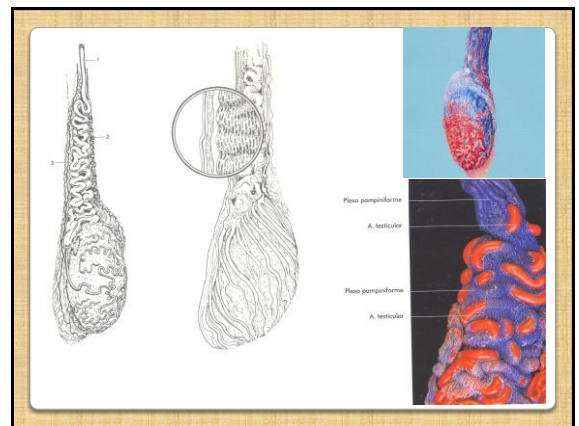
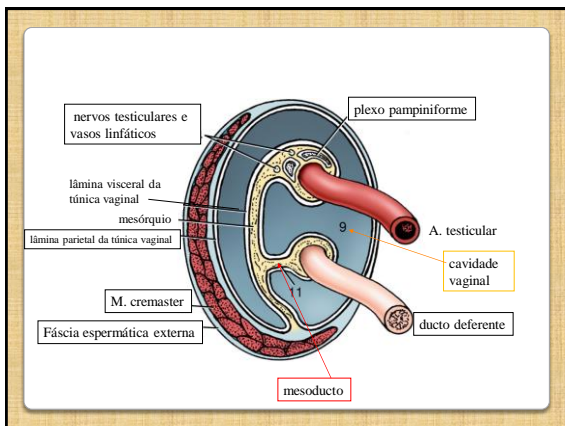
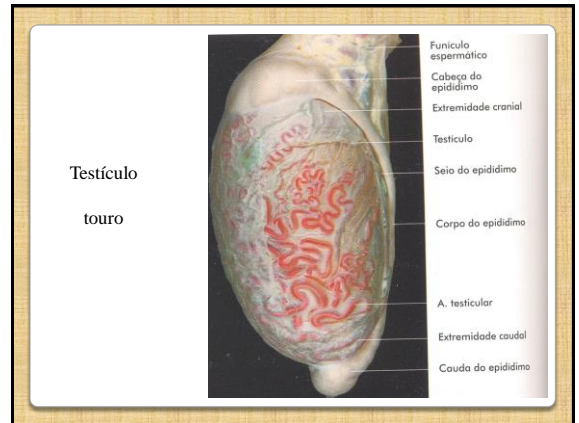
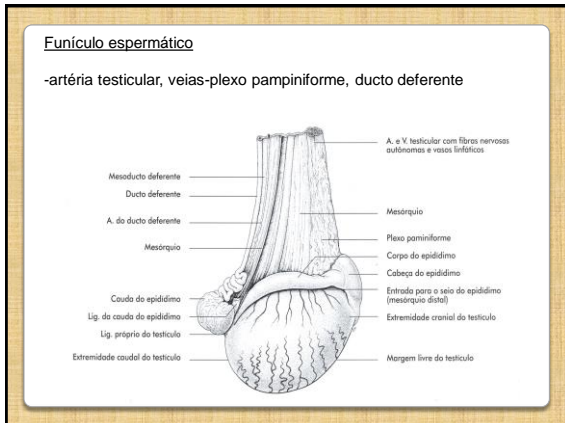
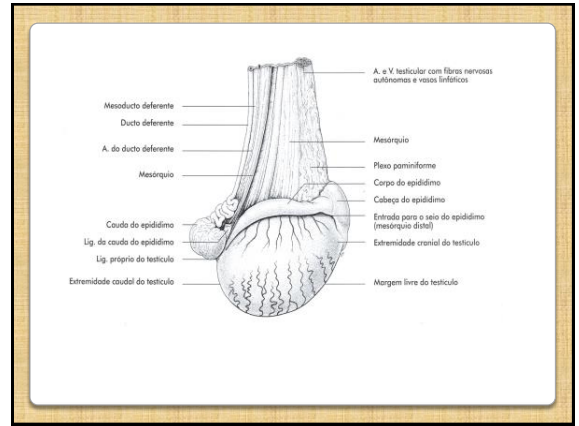
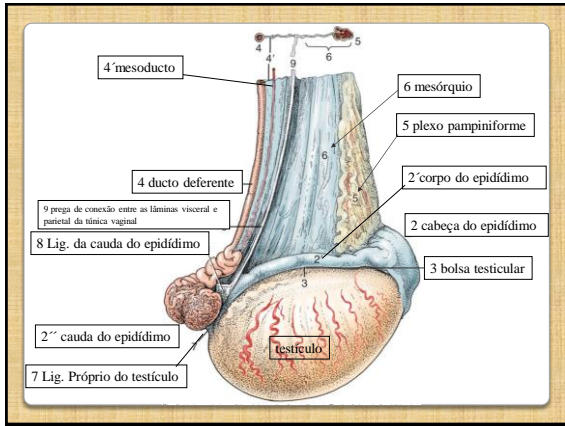


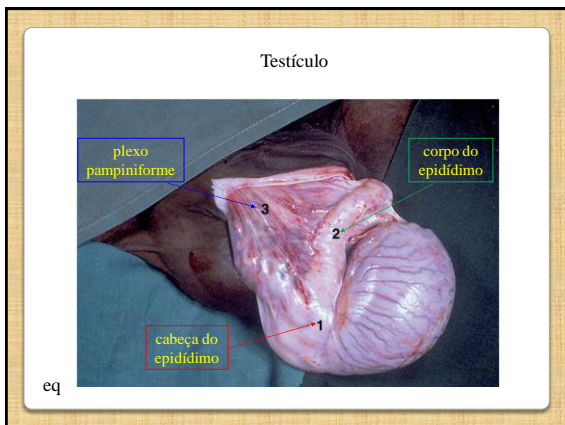
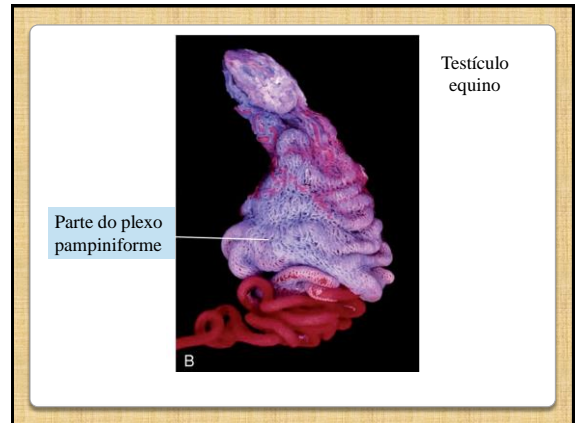
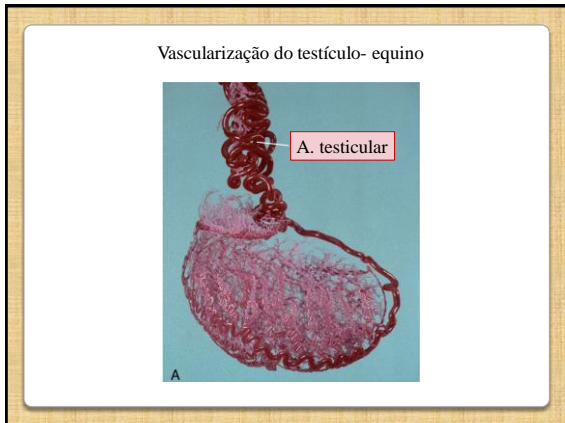
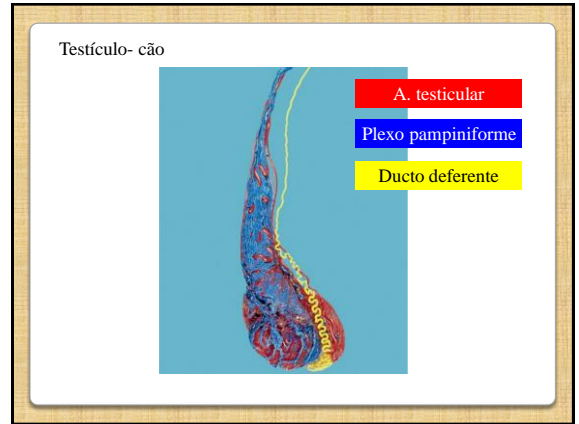
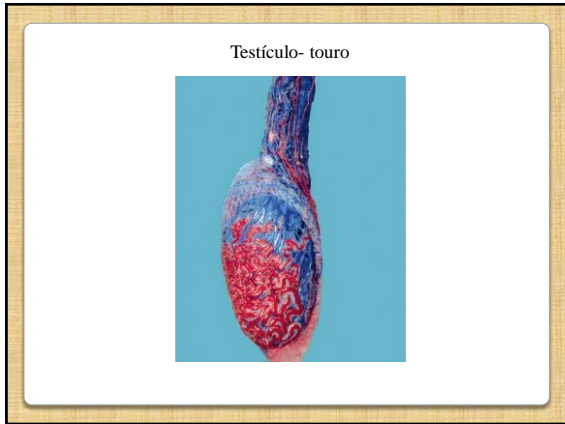
- 1- Túnica Dartos e pele
- 2- Septo escrotal
- 3- Fáscia espermática externa
- 4- Lâmina parietal da túnica vaginal
- 5- Lâmina visceral da túnica vaginal
- 6- Músculo cremaster
- 7- Funiculo espermático
- 8- Ducto deferente
- 9- Cauda do epidídimo

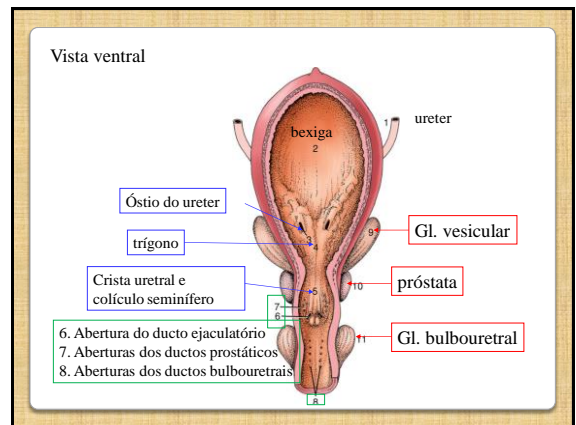
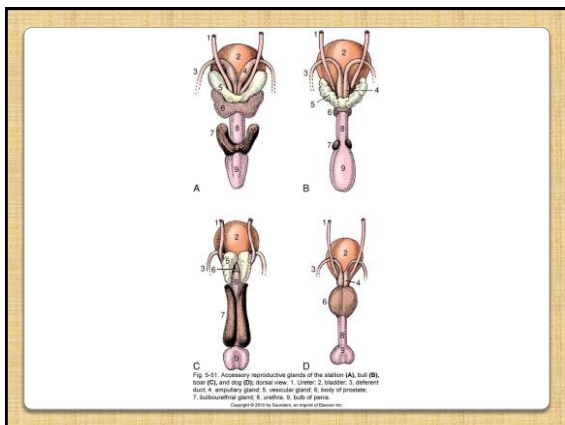
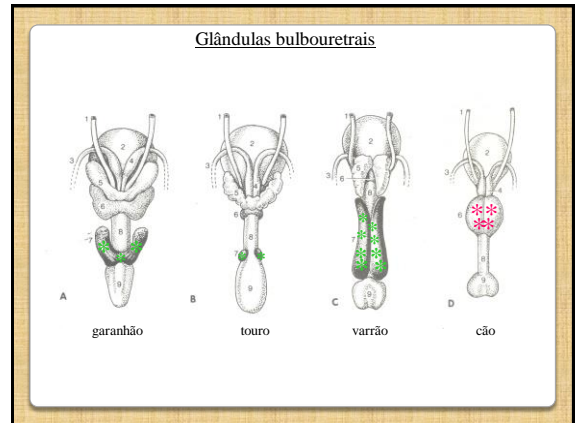
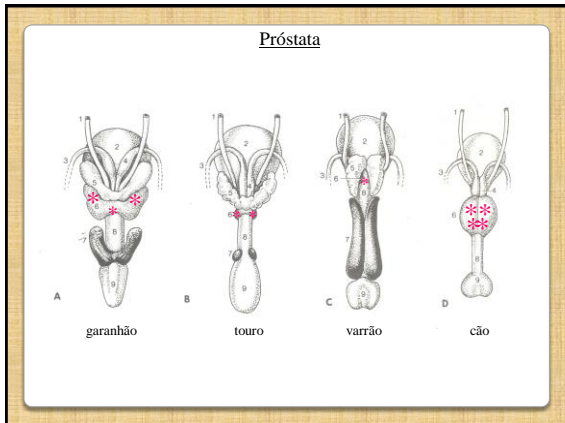
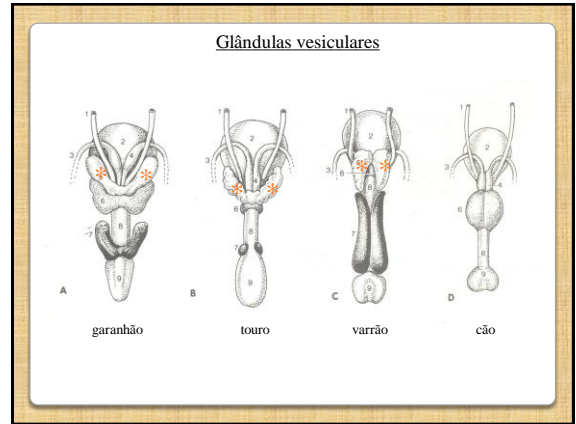
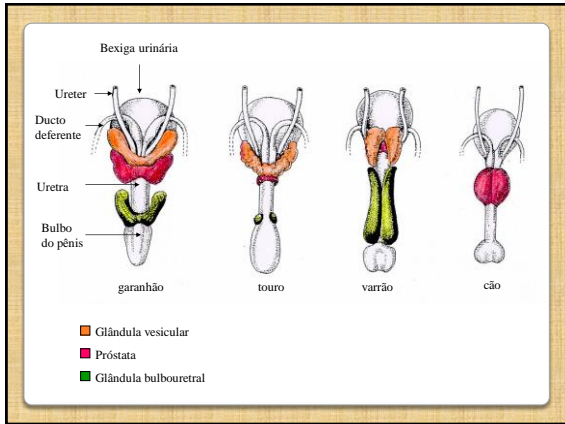


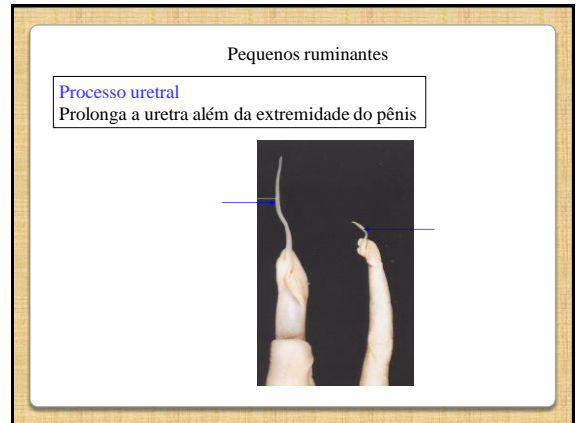
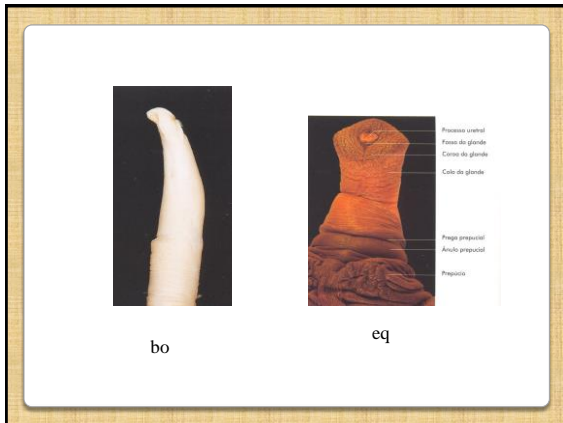
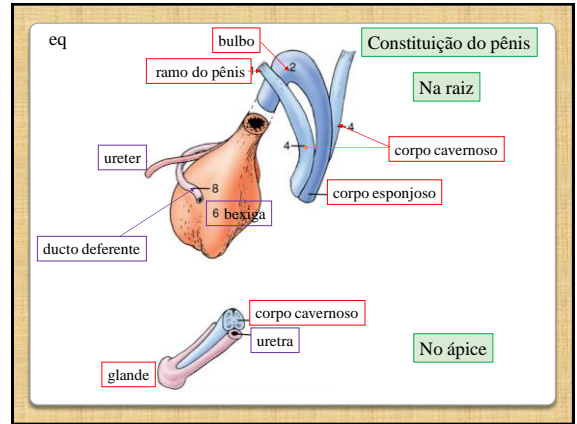
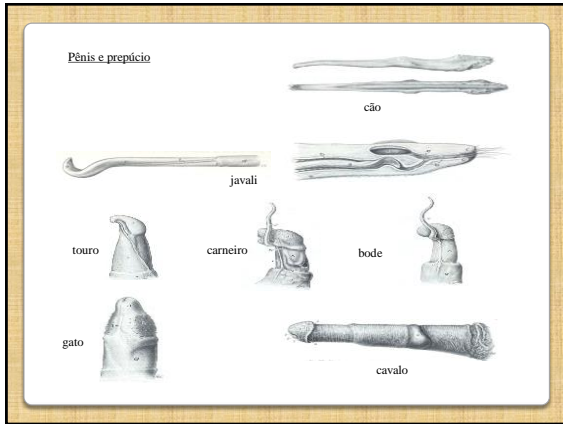
- 1- Túnica Dartos e pele
- 2- Septo escrotal
- 3- Fáscia espermática externa
- 4- Lâmina parietal da túnica vaginal
- 5- Lâmina visceral da túnica vaginal
- 6- Músculo cremaster
- 7- Funiculo espermático
- 8- Ducto deferente
- 9- Cauda do epidídimo







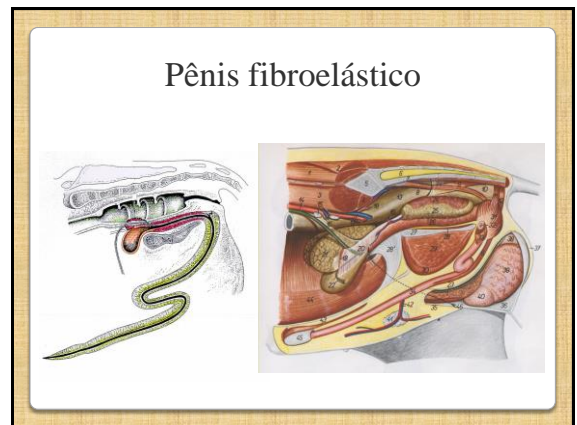


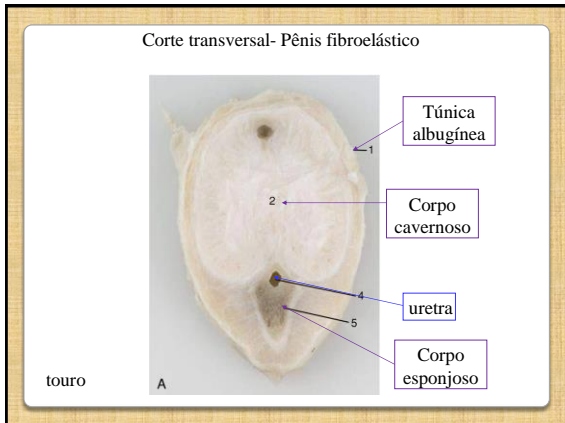
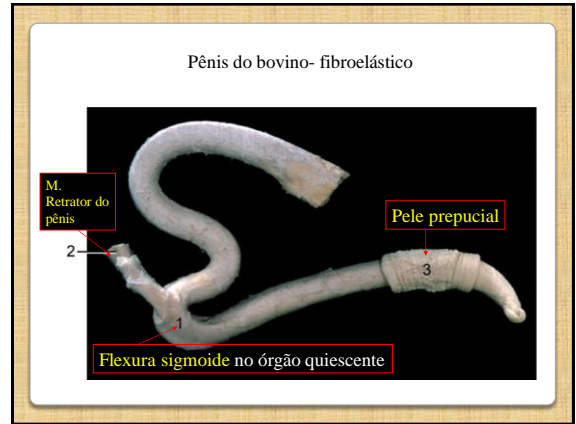
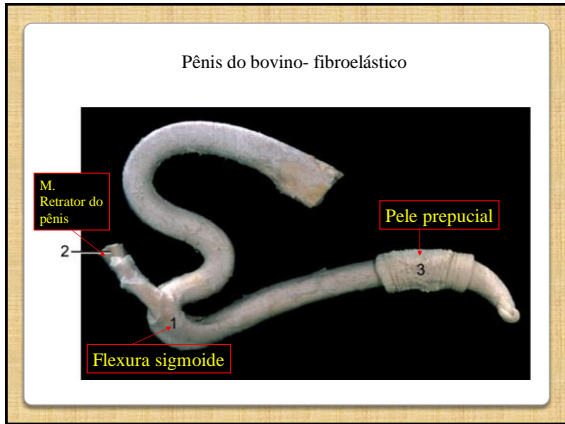


Pênis fibroelástico

Pequenos espaços sanguíneos
Muito tecido fibroelástico
Pouca retenção de sangue para ereção

Ruminantes
Suínos





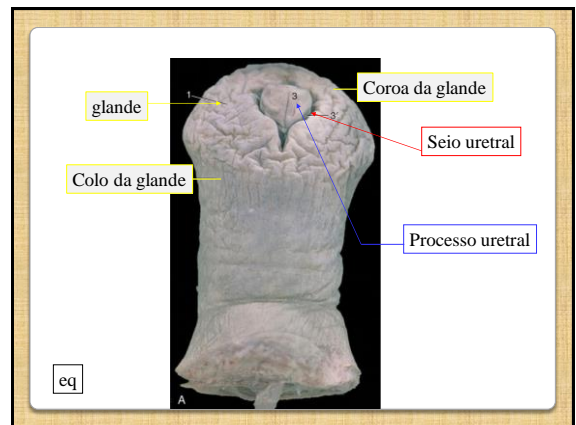
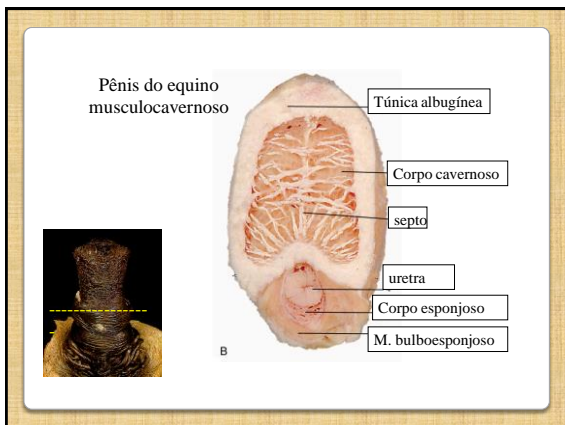
Pênis musculocavernoso

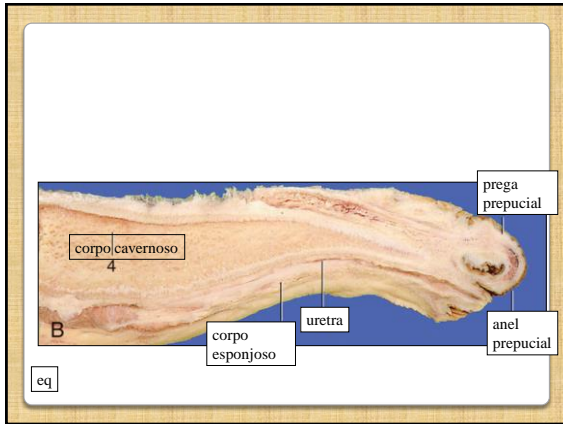
Espaços sanguíneos maiores

Necessidade de muito sangue para ereção

Equino

Carnívoros



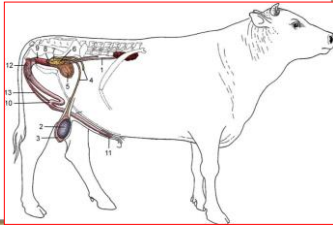


Músculos

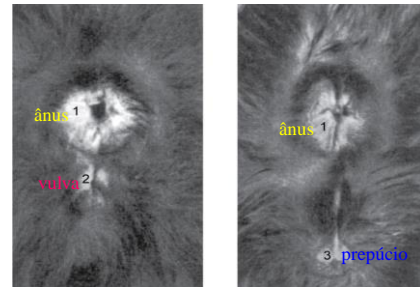
- Bulboesponjoso
- Isquiocavernoso
- Retrator do pênis – fibras musculares lisas
- Prepucial cranial e caudal- ausentes no garanhão

Disposição dos órgãos urogenitais do touro

- 1 ureter
- 2 testículo direito
- 3 epidídimo
- 4 ducto deferente
- 5 bexiga
- 6 Gl. Vesicular
- 7 ampola do ducto deferente
- 8 corpo da próstata
- 9 Gl. Bulbouretral
- 10 flexura sigmoide do pênis
- 11 glande do pênis
- 12 M. isquiocavernoso
- 13 M. retrator do pênis



Períneo- gatos com 5 semanas de idade



CONSIDERAÇÕES FINAIS